

ERTI Estate

Kakheti Region

41°51'46.9"N 45°34'58.8"E

41°54'05.1"N 45°34'31.3"E

41°58'30.2"N 45°44'20.0"E

41°58'48.7"N 45°43'09.9"E

# NEO GEORGIA



**ERTI**

ERTI ESTATE - KAKHETI - GEORGIA

KVARTETI

JOS

ERTI

ABOUT US

# ERTI ESTATE

The winery project represents a synthesis of Georgian winemaking heritage and French enological expertise (Vignerons Consultants by Stéphane Derenoncourt), integrating advanced scientific research with internationally recognized production methods.

The winery project was initiated by SIMPLE Company LLC, a distributor of premium wines from more than 45 countries with over 30 years of industry expertise.



ABOUT US

# OUR MISSION

**THE CREATION OF A NEW QUALITY STANDARD  
FOR PREMIUM GEORGIAN WINES**

via the expression of the Kakheti terroir's full potential through both indigenous Georgian and international grape varieties.



# PHILOSOPHY



Our philosophy is rooted in the belief that great wine begins with a single truth:

**ONE GRAPE CAN REVEAL THE SOUL OF A PLACE.**

That is why our winery is named ERTI—"ONE" in Georgian.

## THE CORE OF OUR PHILOSOPHY:

to show that Georgian soils can not only elevate indigenous varieties but also shape world-class international wines

## ABOUT US

In the heart of Kakheti—birthplace of the world's oldest winemaking tradition—we unite ancient wisdom with modern vision. We honor the Qvevri method, the cornerstone of Georgian heritage, while embracing contemporary techniques that refine precision, structure, and elegance.

Our vineyards bring together the noble grapes of Georgia with international varieties:

SAPERAVI

KISI

SYRAH

MALBEC

MTSVANE

KHIKHVI

CARIGAN

CHARDONNAY

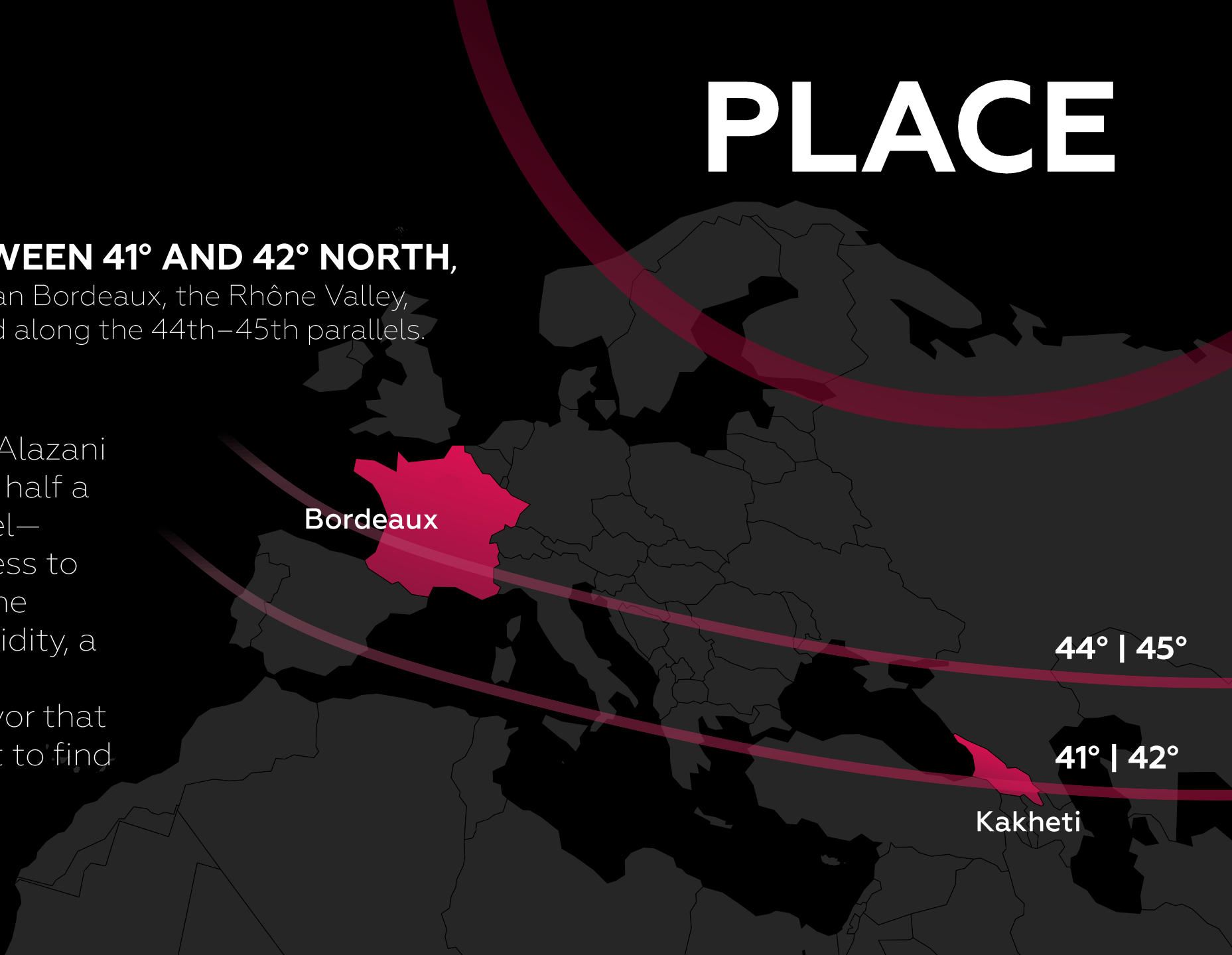
## ABOUT US

# PLACE

### **KAKHETI LIVES BETWEEN 41° AND 42° NORTH,**

noticeably farther south than Bordeaux, the Rhône Valley, and Piedmont, which unfold along the 44th–45th parallels.

Yet the elevation of the Alazani Valley—rising more than half a kilometer above sea level—brings a welcome coolness to the region. As a result, the wines retain a vibrant acidity, a calm elegance, and a remarkable clarity of flavor that one would hardly expect to find so far to the south.



# VINE LAND HERITAGE

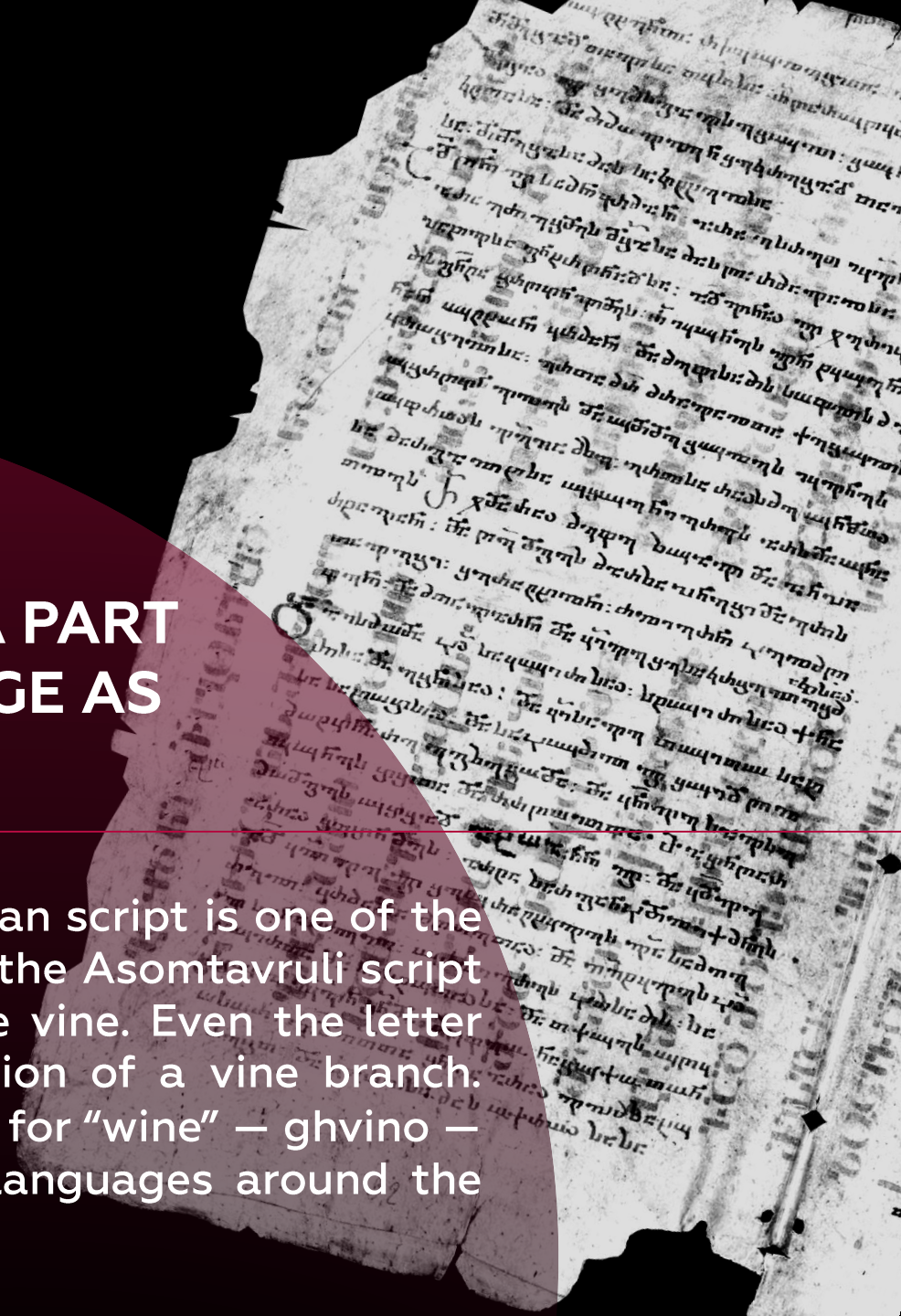
## GEORGIA IS THE CRADLE OF WINE

Here, between the Black and Caspian Seas, more than 8,000 years ago, humankind first domesticated the vine. Since then, it has become part of our soul. When Saint Nino brought Christianity to Kartli, her cross was woven from grapevine shoots — a symbol of life, faith, and the land.

# VINE LAND HERITAGE

THE VINE IS AS MUCH A PART  
OF GEORGIA'S HERITAGE AS  
ITS LANGUAGE

Among the 14 alphabets of the world, the Georgian script is one of the oldest and most sophisticated. Several letters of the Asomtavruli script reflect the shape, movement, and training of the vine. Even the letter ghani ("ღ") is inspired by the horizontal formation of a vine branch. Linguistic studies suggest that the Georgian word for "wine" — ghvino — may be the root of wine terminology in many languages around the world.



# VINE LAND HERITAGE

VITICULTURE IS NOT JUST  
AGRICULTURE –  
IT IS A CULTURAL MONUMENT.

As Maksime Ramishvili noted, each grapevine variety — from Saperavi and Rkatsiteli to Khikhvi, Mtsvane, Chinuri, Tsolikouri, Ojaleshi, Chkhaveri, Aleksandrouli, and Mujuretuli — carries as much historical significance and effort as the construction of Georgia's iconic monasteries and fortresses.

# VINE LAND HERITAGE

## THE VINEYARDS STAND AS LIVING SYMBOLS OF CULTURAL AND SPIRITUAL HERITAGE

A particularly vivid expression of the sacred bond between Georgian viticulture and national monuments can be felt in the vineyards near Nekresi, just 7 kilometers from one of Georgia's most significant historic sites. The Nekresi Monastery, founded in the 6th century by the holy father Abibos of Nekresi, rises above the Alazani Valley as a guardian of both faith and tradition. Its ancient stones and silent courtyards echo the same spirit found in the soil that nourishes our vines.



ABOUT US



# THE CONCEPT

**Terroir-driven | Synergy of traditions and modern oenology |  
Oak aging | Exclusive**

**105.0HA** in total

**8 grape varieties:** Saperavi, Kisi, Mtsvane, Khikhvi, Syrah,  
Malbec, Carignan, Chardonnay.

**4 vineyards:** Busheti, Monastere, Terrace, Tsinandali

**14 wines:** 3 product lines, 4 qvevri wines, 4 single vineyard

**Selective distribution:** specialized fine wine retailers, private  
consumers, collectors and premium Hotels, Restaurants and  
Resorts in the most important wine markets

- **RESPECT FOR TRADITION AND HERITAGE  
REVEALING THE TRUE ESSENCE AND  
POTENTIAL OF KAKHETI'S TERROIRS**
- **AN OPEN-MINDED INTERNATIONAL TEAM AND  
A CLEAR VISION**
- **WINE THAT SYMBOLIZES A NEW GEORGIA —  
PROUD, PRECISE, AND MODERN**

EXPERTISE

# GLOBAL TRACE



## **STÉPHANE DERENONCOURT**

is the french vigneron working as a consultant for numerous estates in Bordeaux and other wine producers worldwide. Founder of Vignerons Consultants and owner of Domaine de l'A in the Côtes de Castillon and Derenoncourt California in Napa Valley.

## **FRÉDÉRIC MASSIE**

is the partner of renowned Bordeaux oenologist Stéphane Derenoncourt since 2004. Frédéric began his career at Château Lafite-Rothschild and has extensive experience working with prestigious estates across the Bordeaux region.

## **DAVID PICCI**

is the agronomist with proven worldwide experience. For nearly a decade, David has been managing the vineyards in Bertinga Winery (Toscana).



TERROIRS

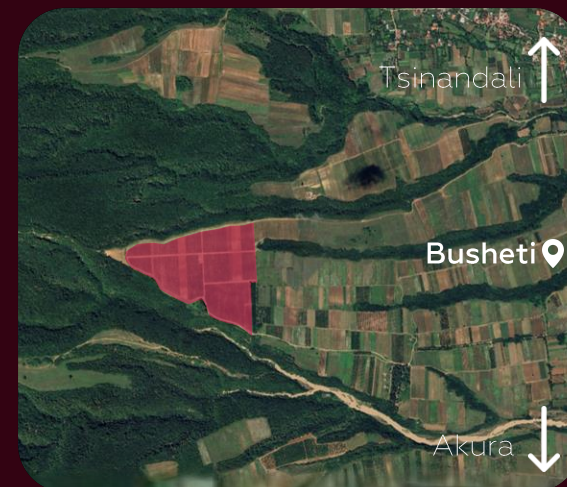
# VINEYARDS

## BUSHETI

41°51'46.9"N 45°34'58.8"E  
750–950 meters above sea level



## LOCATION



A versatile vineyard for both indigenous Georgian and international varieties. Produces wines with vibrant freshness, rich fruit expression, nuanced complexity, and strong aging capacity, especially for Saperavi, Syrah, Chardonnay, and Mtsvane.

## VARIETIES

SAPERAVI

KISI

SYRAH

MALBEC

MTSVANE

KHIKHVI

CARIGAN

CHARDONNAY



Diverse soil types with deep clay layers, combined with high-altitude vineyards and varied microclimates. These soils provide a balance of acidity, minerality, and structure, enhancing concentration, aromatic intensity, and aging potential.

TERROIRS

# VINEYARDS

## TSINANDALI

41°54'05"N 45°34'31"E  
500-600 meters above sea level



## LOCATION



Dedicated to indigenous Georgian varieties (Kisi, Khikhvi, Mtsvane). The vineyard supports both traditional Qvevri wines and European-style expressions, highlighting the versatility and purity of local grapes.

## VARIETIES

MTSVANE

KHIKHVI

KISI



Fertile soils composed of clay, limestone, and alluvial deposits, supported by a cooler regional microclimate. These conditions promote bright acidity, floral aromatics, and pronounced minerality.

TERROIRS

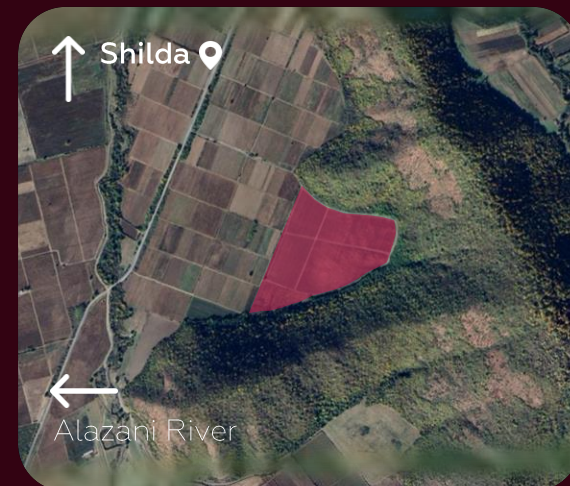
# VINEYARDS

## TERRACE

41°58'48"N 45°43'09"E  
400-450 meters above sea level



## LOCATION



Focused on structured red wines with expressive fruit and balance. Carignan shows vibrant red fruit and spice, Malbec delivers velvety tannins and dark fruit, while Saperavi combines depth, tannin structure, and fruit intensity.

## VARIETIES

SAPERAVI

CARIGAN

MALBEC



Clay-rich, mineral-driven soils in a cooler climate. Fertile conditions contribute to structure, freshness, and well-defined acidity across varieties.

TERROIRS

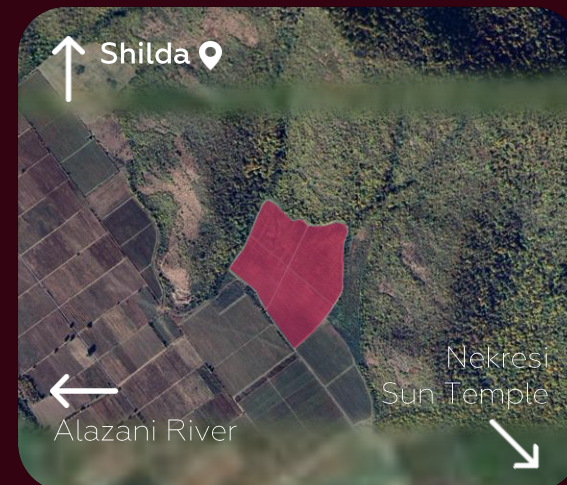
# VINEYARDS

## MONASTERE

41°58'30"N 45°44'20"E  
300-400 meters above sea level



## LOCATION



## VARIETIES



Specialized in Syrah and Saperavi, producing wines with deep color, bold fruit character, rich tannins, and complex aromatics, resulting in a powerful yet balanced structure.

SAPERAVI

SYRAH



Well-drained clay and alluvial soils with strong moisture-retention capacity and excellent drainage. These conditions support even ripening and concentration.

# WINES

## CHVENI KVARTETI

### QUALITY WINES FROM GEORGIAN VARIETIES

Crafted from traditional Georgian grape varieties, these wines express the authenticity and character of local terroirs through a modern winemaking approach.



## JOS JOS JOS

### PREMIUM GASTRONOMIC WINES FROM INTERNATIONAL VARIETIES

Elegant, structured wines designed for gastronomy, produced as both single-varietal expressions and blends. Barrel aging adds depth, balance, and refined complexity.



# PORTFOLIO

## ERTI

### ICON WINES SINGLE VINEYARD SELECTION

Exceptional, limited-production wines from distinctive single vineyards. Each wine reflects the individuality of its site, representing the pinnacle of the winery's craftsmanship.



# CHVENI KVARTETI

## QUALITY WINES FROM GEORGIAN VARIETIES

Crafted from traditional Georgian grape varieties, these wines express the authenticity and character of local terroirs through a modern winemaking approach.

### The KVARTETI ("Quartet")

embodies the idea of **4 elements** coming together in harmony.

It refers first and foremost to the

**4 key terroirs** of the project – Busheti, Tsinandali, Monastery and Terrace. Each terroir, in turn, represents its own quartet of essential components: soil, climate, landscape, and – most importantly – people, whose knowledge, passion, and dedication bring these wines to life.

# KVARTETI WHITE

## VARIETAL COMPOSITION

Mtsvane, Rkatsiteli, Khikhvi, Kisi

## ALCOHOL

12.4%

## VINEYARDS

Bushleti slopes, at an altitude of 750 meters above sea level, and Tsinandali area

## PRODUCTION METHOD

European style – fermentation in temperature-controlled stainless-steel tanks.



## STYLE

A light and elegant dry white wine with delicate fruit and floral aromas. It offers refreshing acidity, a smooth texture, and a clean, lingering finish.

## TASTING NOTES

Aroma: Intense and expressive, with notes of citrus, white flowers, and subtle tropical fruits.  
Taste: Fresh and well-balanced, showing bright acidity, a touch of minerality, and a pleasant fruity aftertaste.

# KVARTETI KISI-KHIKHVI

## VARIETAL COMPOSITION

Kisi, Khikhvi

## ALCOHOL

12.9%

## VINEYARDS

Bushleti slopes, at an altitude of 750 meters above sea level, and Tsinandali area

## PRODUCTION METHOD

Fermentation in temperature-controlled stainless-steel tanks.



## STYLE

A light and elegant wine in a contemporary European style. A harmonious balance of aromatic purity, minerality, and vibrant acidity makes it a versatile and food-friendly wine.

## TASTING NOTES

Aroma: white flowers, pear, citrus, and green apple are complemented by subtle herbal notes and a touch of honey. Taste: fresh and mineral, with pure fruit character, balanced acidity, and a clean, dry finish accented by delicate spice nuances.

# KVARTETI SAPERAVI

## VARIETAL COMPOSITION

Saperavi

## ALCOHOL

14.1%

## VINEYARDS

Alazani River Valley — a mosaic of stony soils with a high content of shale formations.

## PRODUCTION METHOD

Fermentation and maturation in stainless-steel tanks. One third of the wine is aged for 9 months in oak barrels, while the remaining part matures in neutral vessels.



## STYLE

A fruit-forward, light-bodied wine with pronounced freshness and a soft, elegant structure.

## TASTING NOTES

Aroma: reveals ripe blackcurrant, cherry, subtle plum notes, and a hint of black pepper.

Taste: it is rounded and velvety, with gentle tannins, balanced acidity, and a clean, berry-driven finish.

# KVARTETI KINDZMARAULI

## VARIETAL COMPOSITION

Saperavi

## ALCOHOL

12.0%

## VINEYARDS

Southern slopes of the Caucasus Mountains, at an altitude of 350 meters above sea level.

## PRODUCTION METHOD

Fermentation and maturation in stainless-steel tanks. The fermentation is intentionally stopped to preserve natural residual sugar.



## STYLE

A rich yet smooth wine with natural sweetness retained through partial fermentation. It represents the classic Kindzmarauli style — fruit-driven, rounded, and marked by ripe berry flavors and a silky texture.

## TASTING NOTES

Aroma: ripe blackberry, cherry, plum jam, and subtle notes of vanilla and chocolate.

Taste: gently sweet and well-balanced, with velvety tannins, juicy acidity, and a soft, lingering fruity finish.

# KVARTETI QVEVRI WHITE

## VARIETAL COMPOSITION

Mtsvane, Rkatsiteli, Khikhvi, Kisi

## ALCOHOL

11.5%

## VINEYARDS

Premium vineyards of Kakheti, primarily in the Tsinandali and Bushleti areas.

## PRODUCTION METHOD

Traditional qvevri method.



## STYLE

The blend of indigenous Georgian varieties fermented in qvevri, creating a complex and harmonious profile with pronounced fruit expression and subtle mineral undertones.

## TASTING NOTES

Aroma: dried fruits such as pear and fig (contributed by Kisi) intertwine with acacia blossom, spice, and honey notes characteristic of Khikhvi. Taste is full-bodied with fine tannins and balanced acidity. The finish is long and persistent, revealing mineral and spicy nuances.

# KVARTETI QVEVRI RED

## VARIETAL COMPOSITION

Saperavi, Syrah

## ALCOHOL

14.0%

## VINEYARDS

Premium vineyards of Kakheti, primarily in the Tsinandali and Bushleti areas.

## PRODUCTION METHOD

Traditional qvevri method.



## STYLE

The structured and expressive wine, marked by earthy and spicy nuances characteristic of the qvevri style.

## TASTING NOTES

Aroma: the bouquet reveals ripe cherry, prune, violet, and subtle earthy tones.

Taste is full-bodied with rounded tannins and a long, mineral-driven finish.

# JOS JOS JOS

## PREMIUM GASTRONOMIC WINES FROM INTERNATIONAL VARIETIES

Elegant, structured wines designed for gastronomy, produced as both single-varietal expressions and blends. Barrel aging adds depth, balance, and refined complexity.

### **Gaumarjos!**

With this traditional exclamation following a toast, in Georgia, during a feast, people greet their friends and wish them health and well-being. Those present unanimously respond to the toastmaster three times:

### **— Jos! Jos! Jos!**

We wish you health and raise our glasses of Georgian wine in tribute to this wonderful tradition.

# JOS TRIO WHITE

PORTFOLIO

## VARIETAL COMPOSITION

Chardonnay, Kisi, Khikhvi

## ALCOHOL

12.6%

## VINEYARDS

Busheti slopes, at an altitude of 750 meters above sea level

## PRODUCTION METHOD

European style – fermentation in temperature-controlled stainless-steel tanks.



## STYLE

A fresh, aromatic, and vibrant blend of three varieties. Crafted in a European style - the balance between the structure of Chardonnay and the spicy, fruity nuances of the indigenous Kisi and Khikhvi creates a modern, gastronomic profile.

## TASTING NOTES

Aroma: delicate aromas of white flowers, pear, peach, and lime, accented by hints of herbs and citrus.  
Taste: freshness and minerality, with a silky texture and a long, refreshing finish lifted by bright acidity.

# JOS CABERNET FRANCO SAPERAVI

PORTFOLIO

## VARIETAL COMPOSITION

Cabernet Franc, Saperavi

## ALCOHOL

12.7%

## VINEYARDS

Busheti slopes, at an altitude of 750 meters above sea level

## PRODUCTION METHOD

Fermentation in stainless-steel tanks



## STYLE

The modern international blend expresses the distinct identity of both varieties through its refined structure, vibrant freshness, and harmonious balance. Medium-bodied and fruit-driven, it offers both approachability and complexity.

## TASTING NOTES

Aroma: ripe cherry, blackcurrant, and wild berries are complemented by delicate notes of violet and sweet pepper.

Taste: vibrant and expressive, with refreshing acidity, silky tannins, and a lingering finish with subtle spicy nuances.

# JOS QVEVRI CUVÉE WHITE

## VARIETAL COMPOSITION

Kisi

## ALCOHOL

12.8%

## VINEYARDS

Busheti slopes (750 meters above sea level) and the Tsinandali plain

## PRODUCTION METHOD

Traditional qvevri method



## PORTFOLIO

## STYLE

The amber (orange) wine made using the traditional qvevri technique. It combines structure and gentle tannins with fruit, spice, and subtle honeyed notes

## TASTING NOTES

Aroma: dried apricot, quince, honey, and walnut husk, complemented by light hints of spice and mineral dust.  
Taste: dense and textural, with moderate tannins, a slight oiliness, and a long, dry finish layered with dried fruit and oak nuances.

# JOS QVEVRI CUVÉE RED

## VARIETAL COMPOSITION

Syrah, Saperavi

## ALCOHOL

13.5%

## VINEYARDS

Busheti slopes (750 meters above sea level)

## PRODUCTION METHOD

Traditional qvevri method



## PORTFOLIO

## STYLE

The traditional qvevri blend that highlights the richness and terroir-driven character of each variety. Fermented and aged in clay vessels to achieve depth, texture, and harmony.

## TASTING NOTES

Aroma: blackcurrant and blackberry from Saperavi, complemented by spicy notes of black pepper and warm spices from Syrah  
Taste: full-bodied, with a velvety texture and well-integrated minerality. The finish is long, with nuances of dark chocolate and subtle earthy undertones



# ERTI

## ICON WINES SINGLE VINEYARD SELECTION

Exceptional, limited-production wines from distinctive single vineyards. Each wine reflects the individuality of its site, representing the pinnacle of the winery's craftsmanship.

**ERTI** translates from Georgian as **"ONE"**.  
**"ONE OF A KIND.":**

- The unique expression of each terroir's distinctive style and character.
- The signature of mastery — the collaboration between Georgian winemakers and international oenologists.
- The icon of excellence, representing the pinnacle of our estate's craftsmanship.

# ERTI SINGLE VINEYARD BUSHETI

PORTFOLIO

## VARIETAL COMPOSITION

Saperavi

## ALCOHOL

14.0%

## VINEYARDS

Busheti slopes, at an altitude of 750 meters above sea level

## PRODUCTION METHOD

Fermentation in stainless-steel tanks, followed by maturation in french oak: 40% of the wine aged in oak barrels, and 60% aged in stainless steel



## STYLE

The full-bodied and intense red wine with characteristic tannic structure, combining the freshness of high-altitude terroir with elegant oak nuances. A modern interpretation of classic Saperavi — powerful yet beautifully balanced

## TASTING NOTES

Aroma: of blackcurrant, ripe cherry, and plum, enhanced by subtle notes of vanilla, spice, and a touch of smokiness

Taste: deep and structured, with pronounced tannins, fresh acidity, and a long, dry, mineral finish.

# ERTI SINGLE VINEYARD NEKRESI

PORTFOLIO

## VARIETAL COMPOSITION

Saperavi

## ALCOHOL

14.0%

## VINEYARDS

Southern slopes of the Caucasus  
Mountains (400 meters above sea level)

## PRODUCTION METHOD

Fermentation in stainless-steel tanks, followed by maturation in french oak: 50% of the wine aged in oak barrels, and 50% aged in stainless steel



## STYLE

The deep and mature wine with a pronounced sense of place. It balances fruit expression and structure, offering a velvety texture and vibrant freshness thanks to the lower-altitude vineyards (400 m). A modern Georgian red wine with strong aging potential

## TASTING NOTES

Aroma: Intense bouquet dominated by blueberry, ripe cherry, and blackcurrant, enriched with hints of toast, licorice, and black pepper. Taste is layered and refined, with smooth yet gripping tannins and a long, dry finish lifted by fine acidity.

# ERTI SINGLE VINEYARD TERRACE

PORTFOLIO

## VARIETAL COMPOSITION

Saperavi

## ALCOHOL

14.0%

## VINEYARDS

Southern slopes of the Caucasus  
Mountains (350 meters above sea level)

## PRODUCTION METHOD

Fermentation in stainless-steel tanks, followed by maturation in french oak: 40% of the wine aged in oak barrels, and 60% aged in stainless steel



## STYLE

The energetic yet rounded expression of Saperavi, showcasing the varietal's pure character. Thanks to the terraced vineyard layout and moderate altitude (350 m), the wine displays ripe fruitiness balanced by refreshing lift.

## TASTING NOTES

Aroma: Rich aromas of dark berries, cherry, and dried cranberry, layered with nuances of juniper and toasted notes  
Taste: the texture is silky, the tannins are smooth, and the finish is long and structured, with hints of graphite and a touch of pleasant bitterness.

# ERTI WINEMAKER'S SELECTION

PORTFOLIO

## VARIETAL COMPOSITION

---

Saperavi

## ALCOHOL

---

14.0%

## VINEYARDS

---

Busheti slopes (750 m above sea level)  
and the southern slopes of the Caucasus  
Mountains (400 m above sea level)

## PRODUCTION METHOD

---

Fermentation in stainless-steel tanks,  
followed by maturation in french oak:  
18% of the wine aged for over 6 months  
in oak barrels, while 82% aged for 8  
months in stainless steel



## STYLE

---

The refined and meticulously selected wine that unites the expressiveness of several terroirs – the high-altitude Busheti and the southern slopes of Nekresi and Terrace. This complex blending philosophy delivers depth of character, noble structure, and perfect balance between oak and fruit. A signature interpretation showcasing the full potential of Saperavi.

## TASTING NOTES

---

Aroma: A layered bouquet of dried cherry, prune, cinnamon, cocoa, and sweet tobacco  
Taste: smoothly revealing notes of pomegranate and blackcurrant, followed by nuances of spice and oak. Tannins are delicate, acidity is refreshing, and the finish is long, with a distinctive mineral signature.

# CONTACTS

## **VAKHANIA DAVIT**

Business Development Manager

[davit.vakhania@ertiestate.ge](mailto:davit.vakhania@ertiestate.ge)

+995 598 088 296

## **SONIDZE VASIL**

General Manager

[v.sonidze@ertiestate.ge](mailto:v.sonidze@ertiestate.ge)

+995 595 134 555

